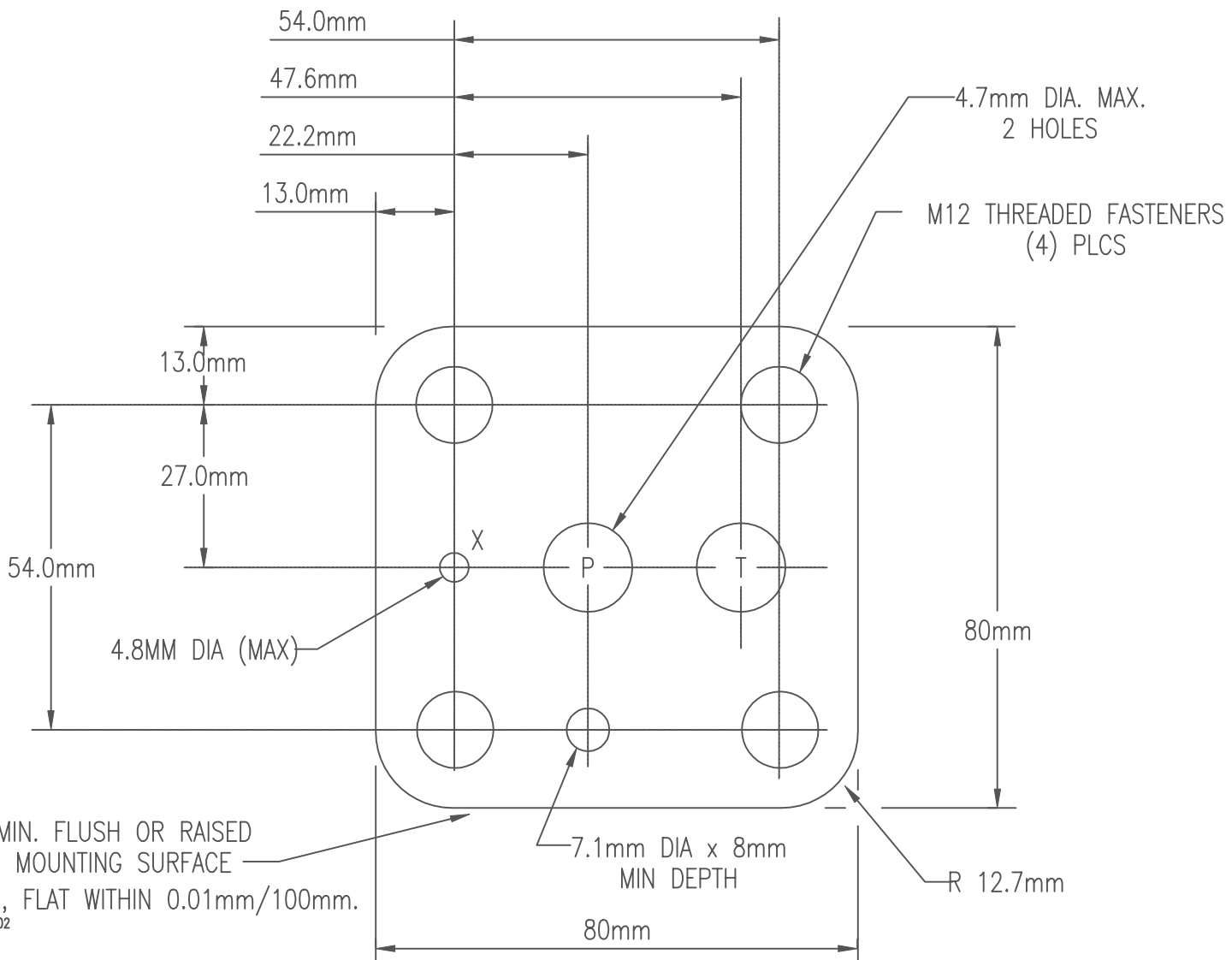


TOLERANCES:

- TO CENTER OF BOLT HOLES: $\pm 0.1\text{mm}$
- TO CENTER OF PORT HOLES: $\pm 0.2\text{mm}$
- TO CENTER OF PIN HOLES: $\pm 0.1\text{mm}$
- TOLERANCE FOR PIN DIA.: $\pm 0.2\text{mm}$

R03



TOLERANCES:

TO CENTER OF BOLT HOLES: $\pm 0.1\text{mm}$
 TO CENTER OF PORT HOLES: $\pm 0.2\text{mm}$
 TO CENTER OF PIN HOLES: $\pm 0.1\text{mm}$
 TOLERANCE FOR PIN DIA.: $\pm 0.2\text{mm}$

R06

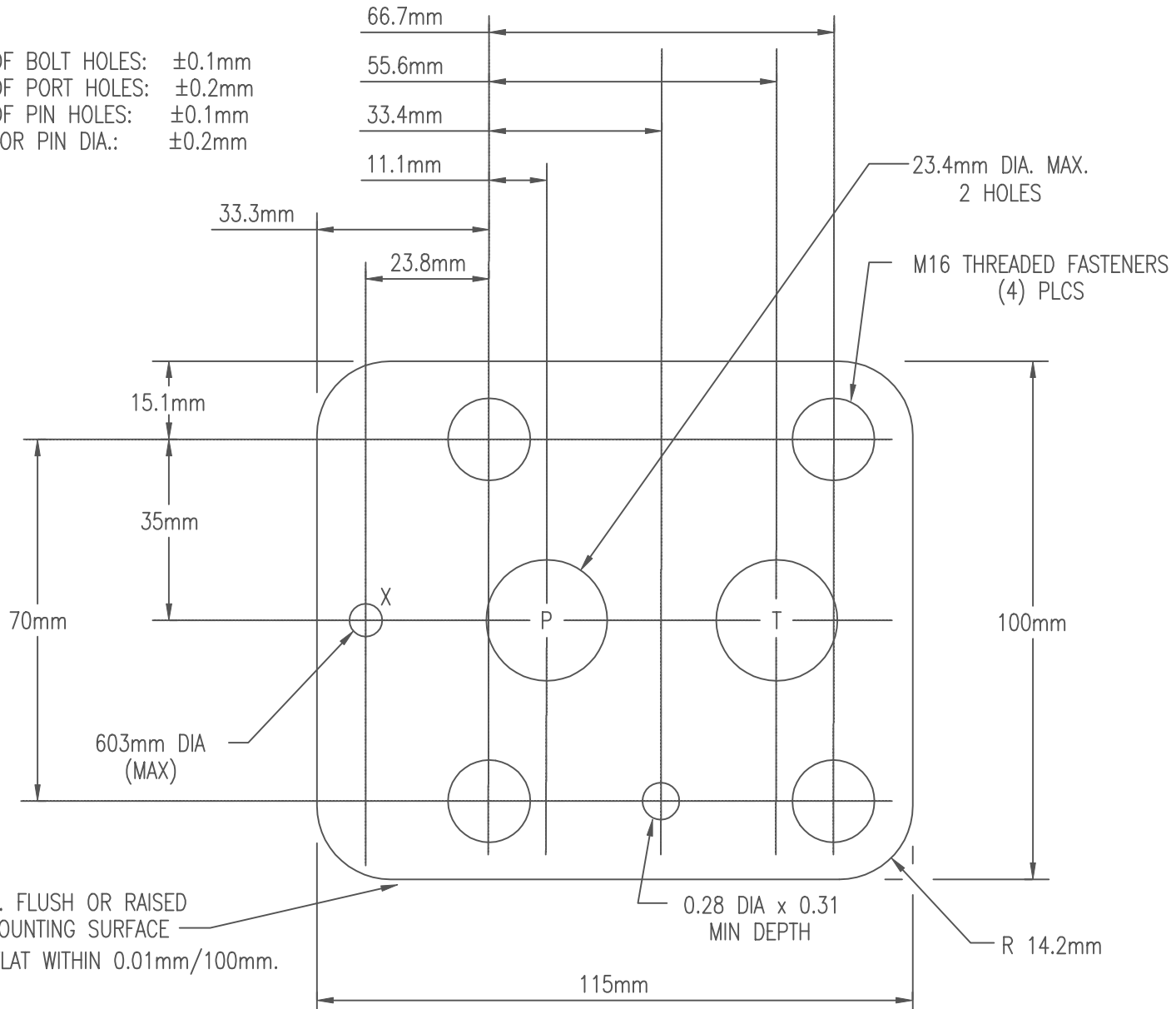
TOLERANCES:

TO CENTER OF BOLT HOLES: $\pm 0.1\text{mm}$

TO CENTER OF PORT HOLES: $\pm 0.2\text{mm}$

TO CENTER OF PIN HOLES: $\pm 0.1\text{mm}$

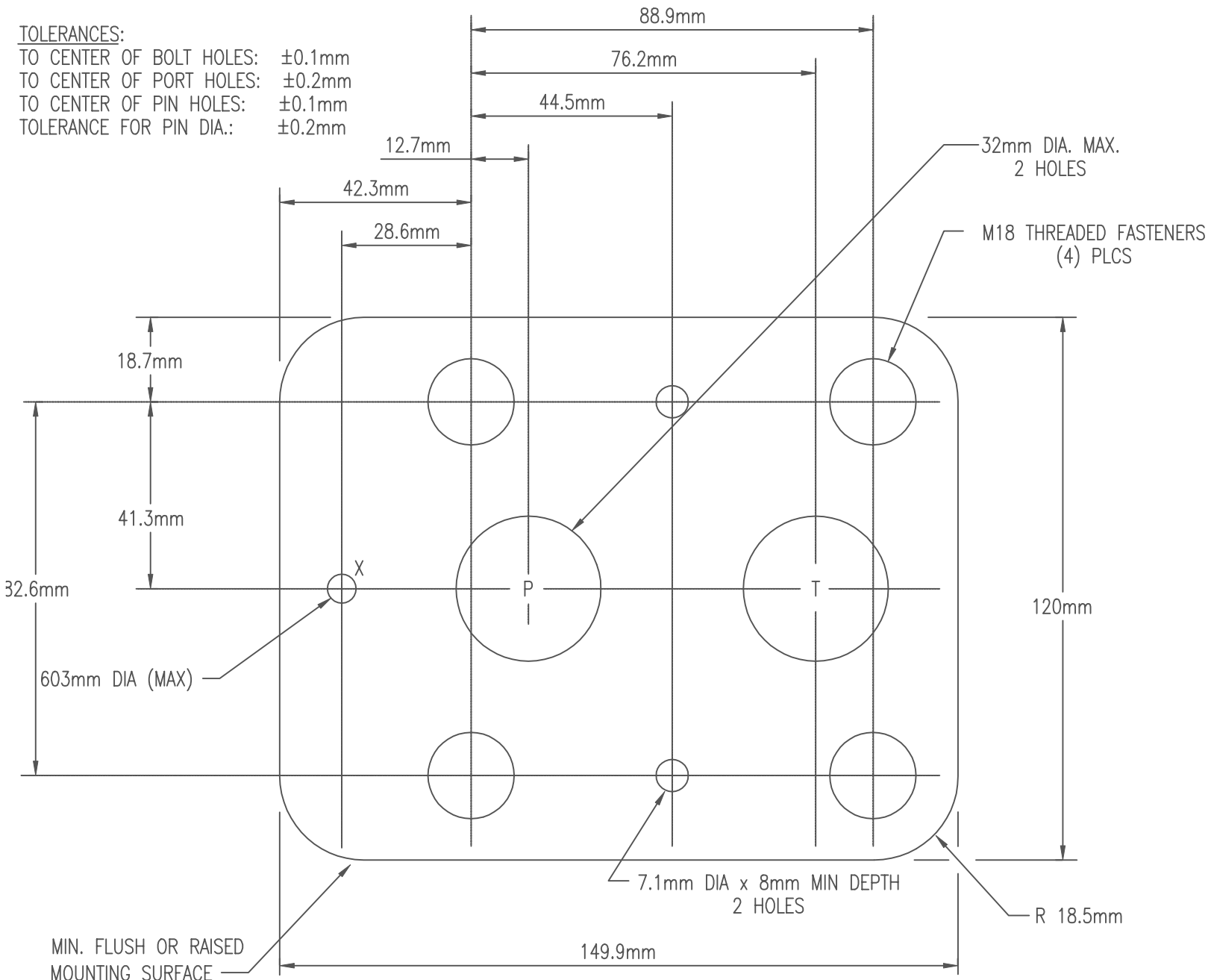
TOLERANCE FOR PIN DIA.: $\pm 0.2\text{mm}$



R08

TOLERANCES:

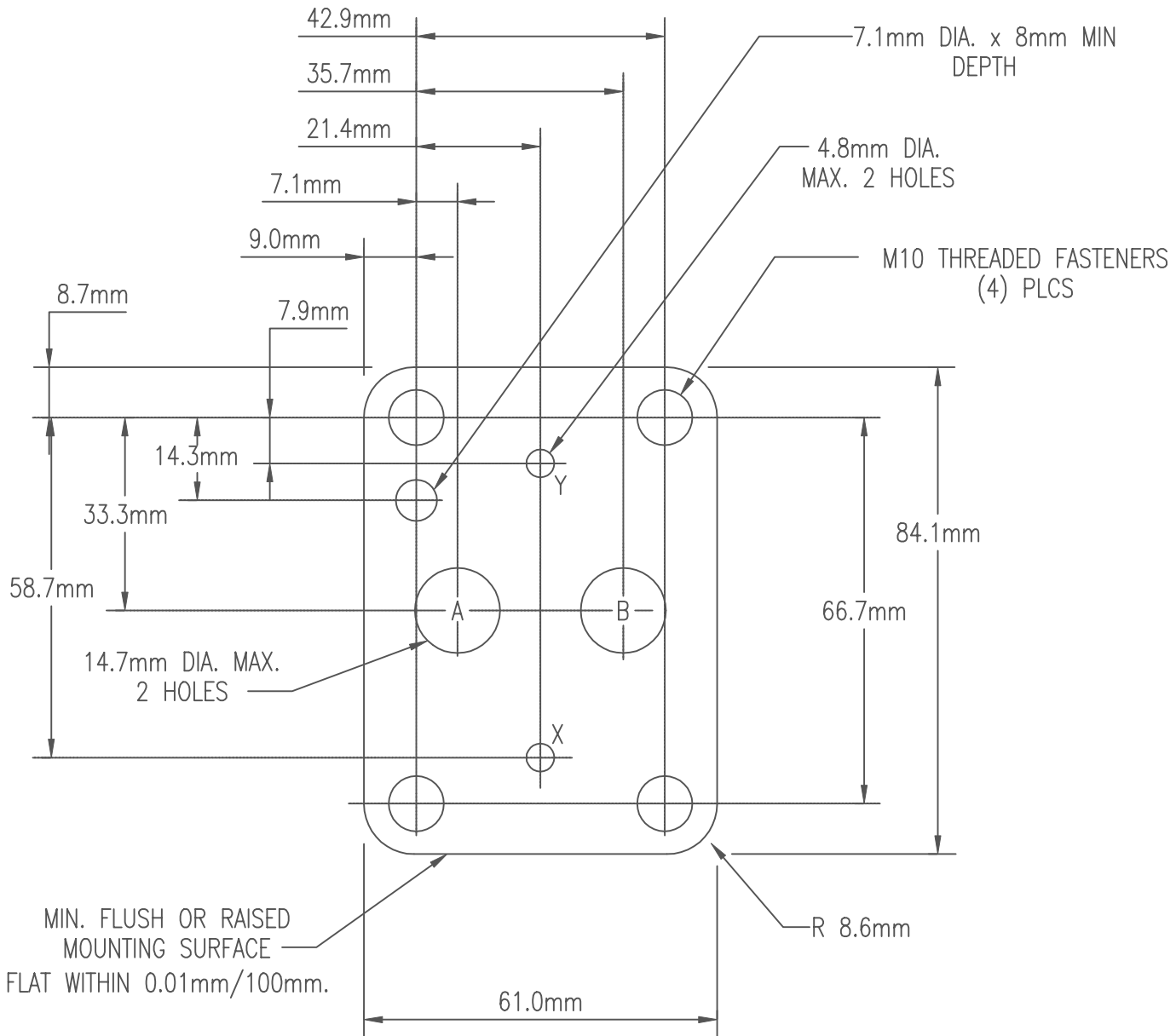
- TO CENTER OF BOLT HOLES: $\pm 0.1\text{mm}$
- TO CENTER OF PORT HOLES: $\pm 0.2\text{mm}$
- TO CENTER OF PIN HOLES: $\pm 0.1\text{mm}$
- TOLERANCE FOR PIN DIA.: $\pm 0.2\text{mm}$



MIN. FLUSH OR RAISED MOUNTING SURFACE

8 $\sqrt{\text{um}}$ FINISH, FLAT WITHIN 0.01mm/100mm.
N6-ISO 1302

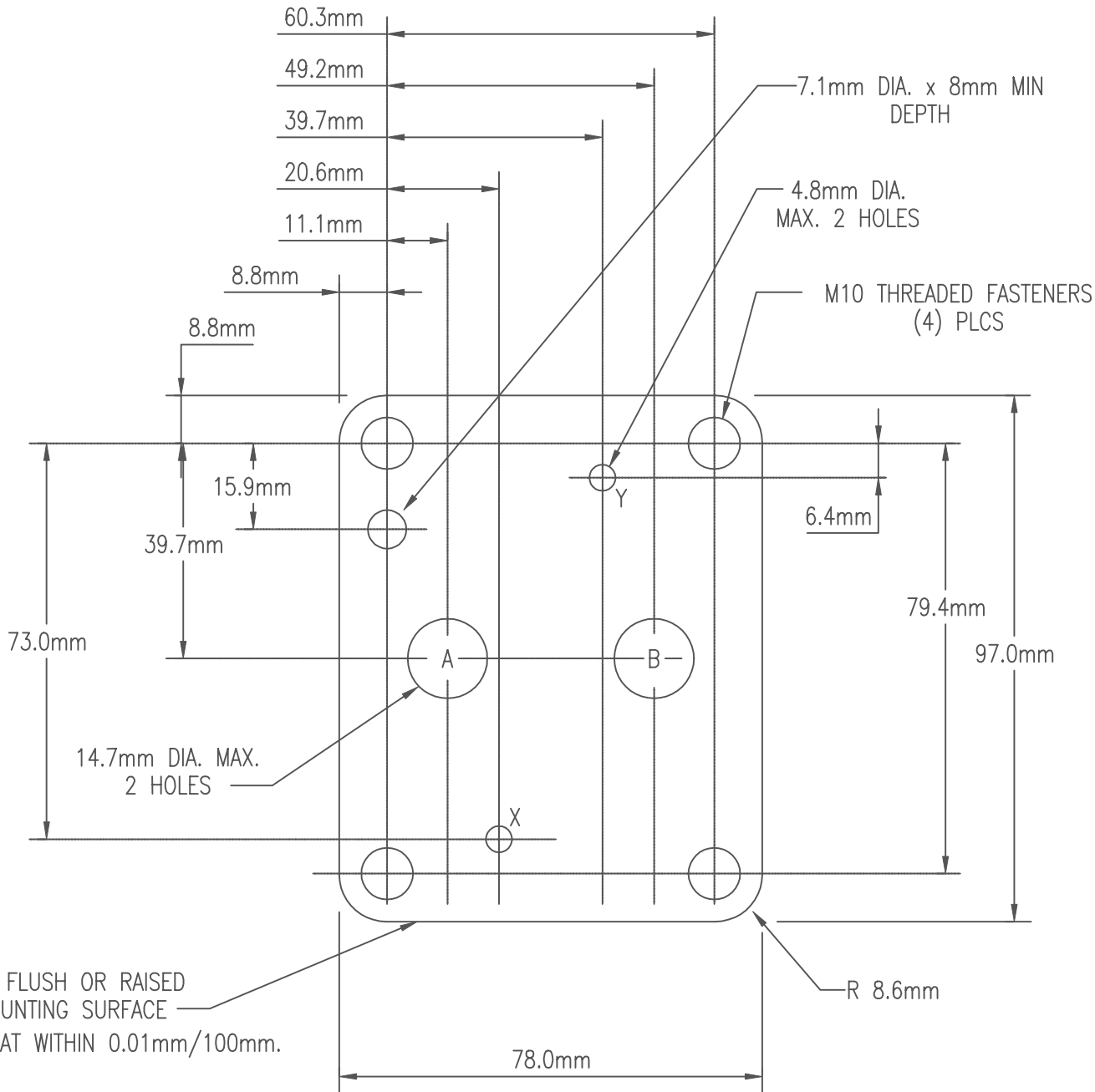
R10



RP06

TOLERANCES:

- TO CENTER OF BOLT HOLES: ± 0.1 mm
- TO CENTER OF PORT HOLES: ± 0.2 mm
- TO CENTER OF PIN HOLES: ± 0.1 mm
- TOLERANCE FOR PIN DIA.: ± 0.2 mm

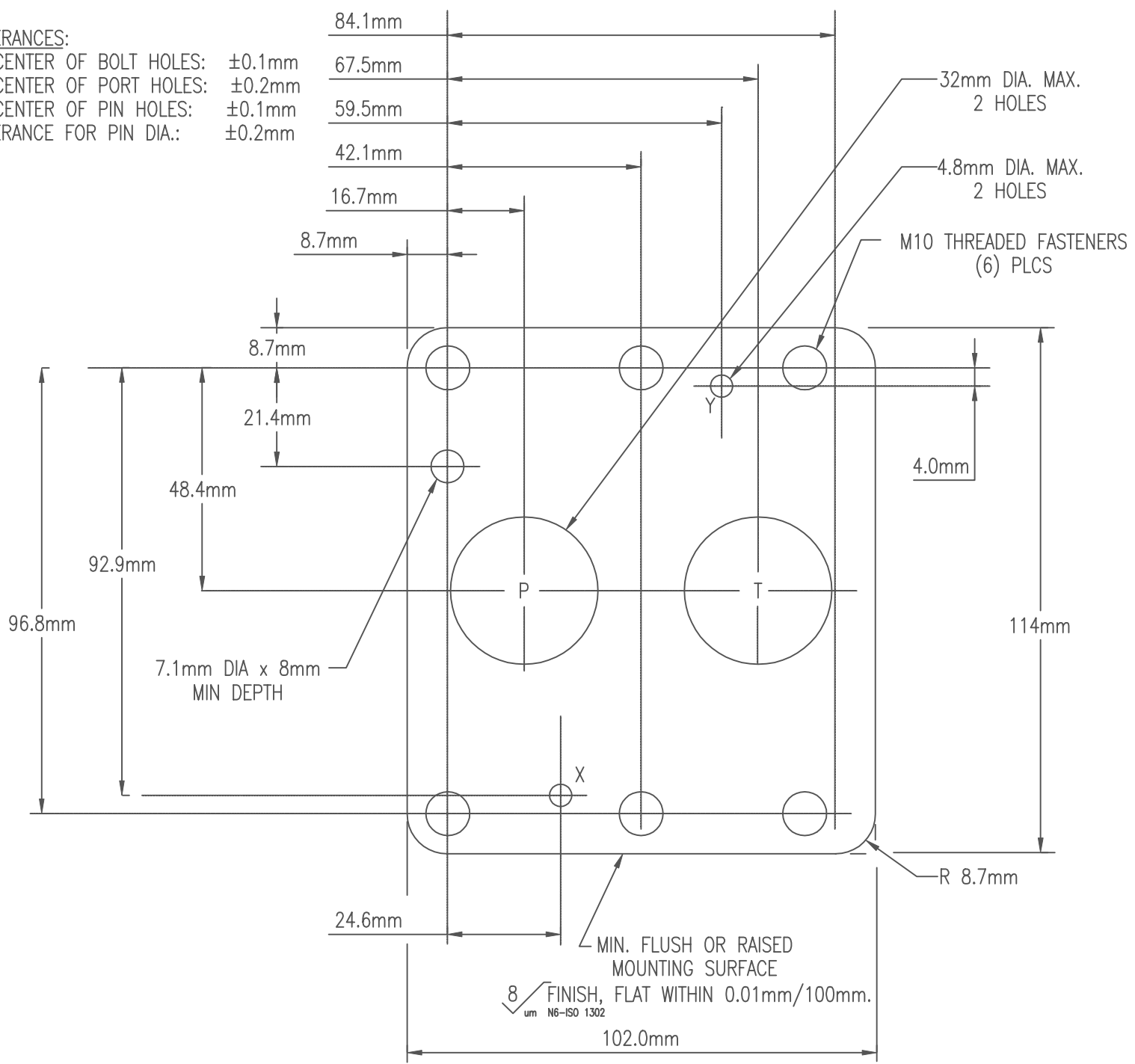


RP08

TOLERANCES:
 TO CENTER OF BOLT HOLES: $\pm 0.1\text{mm}$
 TO CENTER OF PORT HOLES: $\pm 0.2\text{mm}$
 TO CENTER OF PIN HOLES: $\pm 0.1\text{mm}$
 TOLERANCE FOR PIN DIA.: $\pm 0.2\text{mm}$

TOLERANCES:

- TO CENTER OF BOLT HOLES: $\pm 0.1\text{mm}$
- TO CENTER OF PORT HOLES: $\pm 0.2\text{mm}$
- TO CENTER OF PIN HOLES: $\pm 0.1\text{mm}$
- TOLERANCE FOR PIN DIA.: $\pm 0.2\text{mm}$



RP10